

Community Prevention & Wellness Initiative

Partners for Healthy Communities

The Wahluke Community Coalition's mission is to promote a healthier, drug and alcohol-free community for our youth through education, advocacy, and prevention strategies.



Coalition Meetings held on the LAST week of the month.

ALL are welcome!

P.O. Box 907
Mattawa, WA 99349

Coalition Coordinator
Lino Sanchez



509-932-4565
ext. 3042
Lsanchez@wahluke.net

Project Director,
Gigi Calaway, CPP



Wahluke Community Coalition



Safer Together

About
The Community Prevention
and Wellness Initiative
(CPWI)

CPWI is a partnership of state agencies, counties, schools and local prevention coalitions supporting communities in preventing alcohol and other drug abuse and its negative consequences. CPWI priorities include reducing underage drinking, marijuana use and opioid misuse/abuse among middle and high school aged youth. By providing evidence-based practices and promoting the positive changes in communities, we can build healthier communities.

Acerca de la Coalición: Comunidades y escuelas trabajando juntas

The Wahluke Community Coalition was founded in December 2016 in partnership with the Wahluke School District. **Lino Sanchez** became the Coalition Coordinator in August 2021. Though new to the position, Lino is no stranger to the community. Having lived most of his life in Mattawa, he graduated in 2015 from Wahluke High School. A few years later he started working for the Wahluke school district, going strong for 4 years now and is excited to start working as the new Coalition Coordinator.

A devoted, multifaceted volunteer coalition leadership team was established in May 2017 with the help of, now Director of Prevention Grants, **Gigi Calaway**. Wahluke's Coalition leadership team is comprised of members who serve the community through other services and organizations. Lifelong residents comprise half of the team, and many on the team are bilingual in the area's predominant languages: English and Spanish.

Our Chair is **Erika Erazo**, she is the youth leader for the Catholic church. She is uniquely connected to the community and involved in many ways. Secretary: **Juan Mata** is the counselor at the Morris Schott STEAM Elementary, raised in the area he has lifelong connections in the community. Public Relations Coordinator: **Lucy Tapia** is the WSD Communications Director. Community Outreach Coordinator **Elvia Greisen** is a Community Connection Coordinator, EMT, and a Family Advocate. Community Outreach Coordinator **Elizabeth Tapia** is an Elementary School Counselor, local Parent, and Youth Advocate.

About Our Community

The Mattawa area has been a small farming community for over 60 years. The City of Mattawa formed in the 1950's to accommodate for the hydropower workers building the Wanapum and Priest Rapids Dam. In the 1970's the Columbia Basin Irrigation Project expanded their canals into the Mattawa Area which lead to a boom in agriculture development. In the mid 2000's the many row crops converted into orchards and vineyards. This has led to another boom. Mattawa is now known for one of the cheapest power rates in the nation and a leader in apple and wine production.

The City of Mattawa has a growing population of around 9,000 people. The surrounding area has an estimated 30,000 people. The majority of people living here are of Hispanic descent- mainly from Mexico. Around 60% of the population is monolingual Spanish speakers. The average age is around 28-29. Most of the area is zoned for agricultural production. The City of Mattawa performed a medium income survey in 2017, and it was estimated that the median income is \$29,000

Approximately 78% of households in the Mattawa area have children in the home. Second and third generation farmers and business owners continue to raise their families here.

Mattawa has the highest percentage of migrant families in the state of Washington with over 90% of families speaking Spanish as their heritage language in the home. The importance of family and strong cultural ties connect the community in celebrating success and in mitigating and meeting challenges associated with rural, low income communities.



Student Assistance Program Specialist

Oscar Herrera, SUDPT



Email - oherrera@wahluke.net

Jr High

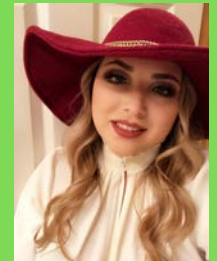
509-932-4455 ext 3588

High School

509-932-4477 ext 3486

Substance Abuse Prevention Assistant

Briseida Gonzalez



509-932-4455 ext 4412

bgonzalez@wahluke.net

ESD 105 Danielle

Watkins

Phone: (509)571-7716

Email:

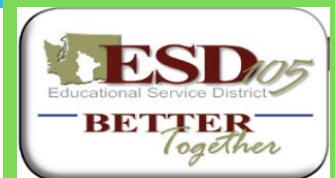
[edanielle.watkins@esd](mailto:edanielle.watkins@esd105.org)

105.org

33 South 2nd Avenue

Yakima, WA. 98901

Our Partners:



CPWI is funded by:



About Prevention Programs in our Community

WE STRIVE TO INCREASE:

Family bonding, school and community connectedness and awareness of the adverse effects of youth alcohol, tobacco and drugs use.

WE WANT TO REDUCE:

Youth interest and access to substances by bringing evidenced based curriculum to the schools, educating families and conducting policy reviews.

CURRENT PROGRAMS:

Strengthening Families/ Fortalciendo Familias, Lions Quest, SPORT, Youth Prevention Club, Health Education, Media Strategies, and Information Dissemination.